

MONTHLY MEMBERSHIP PROGRESS REPORT

LOCATION SOUTH DAKOTA

District 5 SW

Results as of: 6/30/2023

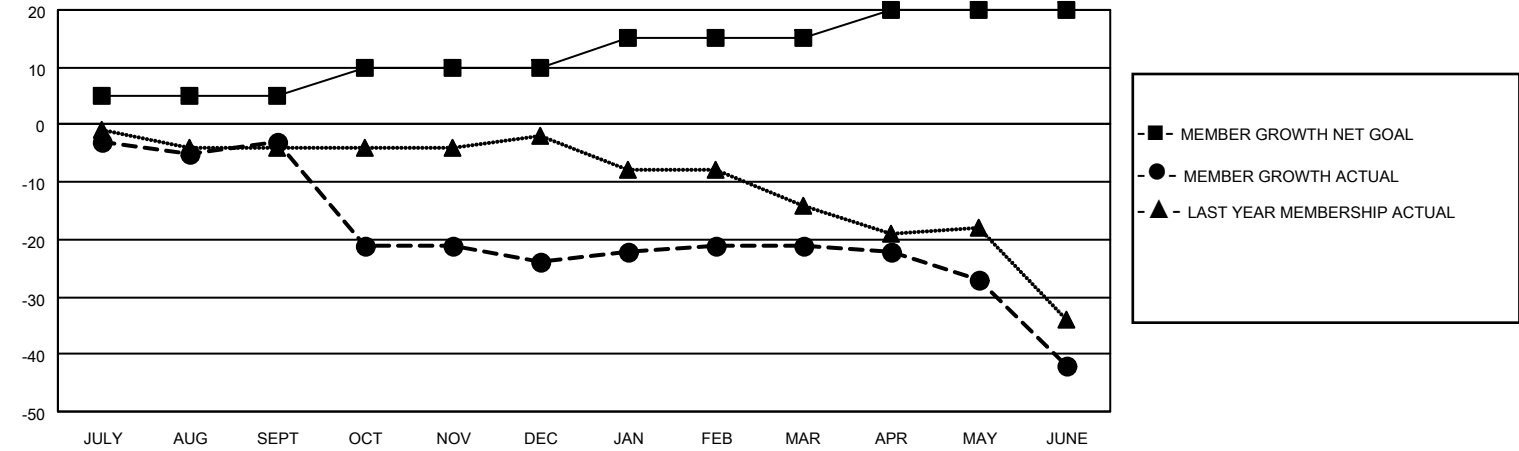
| Clubs | | | |
|-----------------------|---------------|-----------|---------------|
| RESULTS FOR 2022-2023 | | | |
| QUARTER | NEW CLUB GOAL | NEW CLUBS | DROPPED CLUBS |
| JULY/AUG/SEPT | 0 | 0 | 0 |
| OCT/NOV/DEC | 1 | 0 | 0 |
| JAN/FEB/MAR | 1 | 0 | 0 |
| APR/MAY/JUNE | 1 | 0 | 2 |

| Members | | | |
|-----------------------|------------------------|----------------------|---|
| RESULTS FOR 2022-2023 | | | |
| QUARTER | MEMBER GROWTH NET GOAL | MEMBER GROWTH ACTUAL | DROPPED MEMBERS ACTUAL (including transfers) |
| JULY/AUG/SEPT | 5 | 10 | 12 |
| OCT/NOV/DEC | 5 | 7 | 27 |
| JAN/FEB/MAR | 5 | 9 | 3 |
| APR/MAY/JUNE | 5 | 6 | 27 |

GOALS AND ACTUAL NEW CLUBS CUMULATIVE



GOALS AND ACTUAL MEMBERS CUMULATIVE



| | |
|------------------------|-----------|
| DROPPED CLUBS: 2 | |
| <u>DROPPED MEMBERS</u> | |
| DECEASED | 12 |
| CLUB CANCELLED | 4 |
| OTHER | 53 |
| TOTAL | 69 |

12 CLUBS OF 31 ADDED 1 OR MORE NEW MEMBERS

[CLICK HERE FOR CUMULATIVE MEMBERSHIP DATA](#)

| <u>GENDER DISTRIBUTION</u> | |
|--|--------------|
| MALE | 453 (74.51%) |
| FEMALE | 155 (25.49%) |
| NON BINARY | 0 (0.00%) |
| PREFER NOT TO ANSWER | 0 (0.00%) |
| TOTAL FAMILY UNIT MEMBERS | 90 |
| FAMILY MEMBERS PAYING HALF DUES | 46 |